



Beef Tripe with Honeycomb cooked



Beef Omasum cooked



Beef Aorta



Beef Esophagus



Beef Trachea



Beef Livers



Beef Hearts



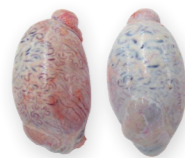
Beef Kidneys



Beef Spleen



Beef Tongues



Beef Testicles



Beef Pizzle



Ox Muzzle



Beef Head Meat



Beef Throats

BEEF PRODUCTS



Goldschmaus Gruppe
Industriestraße 10-12
DE 49681 Garrel

Standort Oldenburg
Schlachthofstraße 36
DE 26135 Oldenburg

Tel. +49 4474/895-0
info@goldschmaus.de
www.goldschmaus.de



Goldschmaus Gruppe[®]
Die Marke der Bauern.



Beef Diaphragm with Membrane



Beef Feet



Beef Tails



Beef Lungs



Beef Paddywacks



Beef Loin Ribs



Beef Riblets



Beef Spareribs



Beef Breast Bones



Beef Neck Bones



Beef Moon Bones



Beef Flank Membranes



Beef Paddywacks



Beef Softbone



White Sinews



Beef Achilles Tendons



Beef Striploin Tendons



Beefhammer



Flat Iron



Tomahawk

NOTES

**THE BEST MEAT
IN THE GREATEST
VARIETY.**